



Smart Connect meter cycles through a few different screens. Each Screen displays for 5 seconds. DISPLAY TEST: Self-Test mode. Ensures meter's display is working correctly.



Channel 001: Displays total kwhs usage since meter was set. Similar to car's odometer, the counter increases by 1 every time 1 kWh (1000 watts) is used. It does not reset but dials over after 999,999 kWh have been captured.



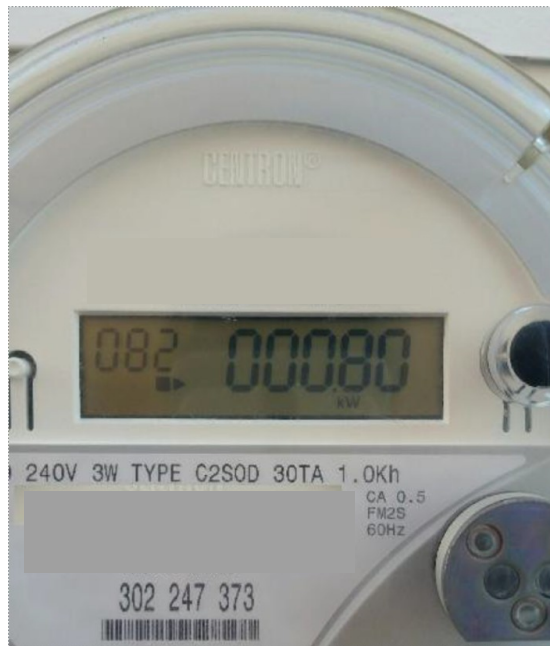
Pid Channel: Program ID Mode- identifies if meter captures usage hourly or every 15 min



Channel 082: Displays real time usage in kw- Measurement increases or decreases as appliances are turned on/Off- Channel can be used by customer to conduct load check.

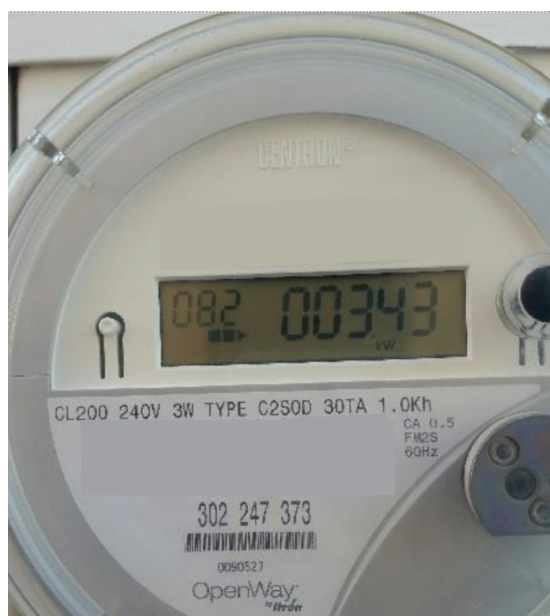
000.31= 310 watts

Picture was taken while only 1 fridge was cycling on.



Channel 082: Picture was taken when 1 fridge and 4-150 watt fans were on at the same time

000.80=800 watts



Channel 082: Picture was taken when 1 fridge and 4 ton ac unit were on at the same time.

003.43= 3,430 watts