

**POTENTIAL RESOURCE ISSUE:**

- Protection of cultural resources that are listed in, or eligible for listing in, the National Register of Historic Places (NRHP).

**PROJECT NEXUS:**

- Operation and maintenance of Southern California Edison's (SCE) Kaweah Hydroelectric Project (Kaweah Project or Project) could potentially affect objects, sites, buildings, structures, or districts that comprise archaeological and historic resources and traditional cultural properties/places (TCPs) that may qualify for listing in the NRHP.
- Under Section 106 of the National Historic Preservation Act (NHPA), the FERC is required to ensure that their decision to relicense the Project will not adversely affect cultural resources.

**POTENTIAL LICENSE CONDITION:**

- Update SCE's existing Cultural Resources Management Plan (CRMP) for the Kaweah Project, including:
  - Incorporate information about new historic properties that are identified within the Federal Energy Regulatory Commission (FERC) Project boundary;
  - Identify measures to avoid adverse effects (impacts) to these historic properties;
  - Modify existing measures, as needed; and
  - Identify any new monitoring and/or consultation requirements.

**STUDY OBJECTIVES:**

- Identify all known and currently undiscovered cultural resources that could potentially be affected by Project operation and maintenance activities.
- Evaluate newly discovered cultural resources to determine if they are eligible for listing in the NRHP.

**EXTENT OF STUDY AREA:**

The Kaweah River Watershed will be used to develop ethnographic information (Map 3.2-1). For the purposes of field surveys, the Study Area is equivalent to the Area of Potential Effects (APE), which includes:

- All Project facilities and lands located within the existing FERC Project boundary and any other lands where operations and/or maintenance activities are conducted.
- For surveys at or around Project facilities that are located outside of the current FERC Project Boundary and on private land, SCE will take the following steps to obtain approval to survey on private property:
  - Notify the landowner of Project relicensing and request authorization to enter the property to conduct surveys.
  - If authorization is obtained, SCE will complete surveys as described in this technical study plan.

- If authorization is not obtained, SCE will not complete surveys at these locations.

In cases where SCE has obtained permission to survey on private lands, the survey area will be limited to the immediate area surrounding the facility, plus a defined buffer area, depending upon facility type, as summarized in Table CUL 1-1. The primary facilities associated with the Kaweah Project and existing FERC Project boundary are shown on Map CUL 1-1a-g. All facilities associated with the Kaweah Project are identified on Table CUL 1-2.

Note that the Study Area does not include Project facilities or associated lands that are located within the boundaries of Sequoia Kings Canyon National Park (SKCNP). Project facilities located within the SKCNP are operated under a Special Use Permit issued by the National Park Service (NPS) and are not under FERC jurisdiction.

### **STUDY APPROACH:**

The FERC is required to follow regulations that are designed to identify and address the potential effects that a hydroelectric project may have on cultural resources. These regulations are contained in Title 36 of the Code of Federal Regulations (CFR), Part 800 (36 CFR 800), and provide direction to federal agencies regarding the implementation of Section 106 of the NHPA. SCE is required by FERC to carry out studies that are consistent with these regulations. Consequently, the CUL 1 – Cultural Resources Technical Study Plan (TSP) outlined below follows the steps defined in the regulations and is applicable to all types of cultural resources that may be associated with the Project. SCE will request that the FERC authorize SCE as their federal designee to help facilitate consultation with the resource agencies, Tribes, and the State Historic Preservation Officer (SHPO) under Section 106 of the NHPA.

The Kaweah Project facilities that are under FERC jurisdiction are situated on private land or on land managed by the U.S. Bureau of Land Management (BLM). Therefore, the study approach also considers the BLM's requirements for identifying and evaluating cultural resources on BLM land outlined in the following documents:

- 2014 California BLM State Protocol Agreement (BLM et. al. 2014);
- Manual 8110 – Identifying and Evaluating Cultural Resources (BLM 2004);
- California BLM Guidelines for a Cultural Resources Inventory (BLM undated); and
- Special Permit Conditions Continuation Sheet: California Conditions (BLM 2007).

It is important to note that SCE conducted cultural resources surveys in 1989, as part of the previous Kaweah Project relicensing effort (Taylor 1989). As part of this effort, SCE conducted extensive research and consultation to identify known cultural resources in the vicinity of the Kaweah Project. In addition, SCE conducted intensive pedestrian surveys in the vicinity of most Project facilities, with the following exceptions: some roads, primarily those located on private property, where SCE has limited control; areas with impenetrable vegetation; and project facilities situated on slopes exceeding 30%, where the presence of archaeological resources is considered unlikely (Taylor 1989). Four resources that could potentially be affected by Project operation and maintenance activities were subsequently evaluated to determine their eligibility for the NRHP (Wickstrom et al. 1990, Lehman et al. 1990). The evaluation studies concluded that two archeological sites and one multi-component archaeological/historic site are eligible for inclusion in the NRHP. In addition, select elements associated with the Kaweah No. 3 Project (but not Kaweah No. 1 or No. 2) were determined eligible for inclusion on the NRHP as a Historic District. Accordingly, SCE developed a Cultural Resource Management Plan (CRMP) that identifies

measures to avoid adverse impacts to NRHP eligible sites, including the Kaweah No. 3 Project facilities that could be affected by operation and maintenance of the Kaweah Project and/or emergency circumstances (SCE 1992). The approach presented in this TSP is designed to build on and augment the survey and evaluation work completed in 1989 and 1990, respectively.

### **Cultural Resource Inventory**

SCE will develop ethnographic information for the Kaweah River Watershed and will identify and inventory cultural resources in the Study Area (defined above) using existing literature and site records and by conducting field surveys in previously unsurveyed areas, as outlined in the following.

#### Develop Ethnographic Information

- Obtain, compile, review, and summarize existing ethnographic information available for the Kaweah River Watershed, including:
  - ethnographic field notes from previous studies (e.g., Latta, Gayton, Kroeber, and others), as available;
  - published ethnographic literature;
  - ethnographic information held at various tribal repositories; and
  - archival and historic photographs.
- Conduct a Sacred Lands File search with the Native American Heritage Commission to determine if any known places of importance to Native American groups are present within the Study Area (i.e. the APE), or in the immediate vicinity.
- Consult with appropriate Tribal representatives to identify properties, plants and other resources of traditional cultural or religious importance to Native Americans (including “traditional cultural properties” as discussed in National Register Bulletin No. 38) that may be present in the Study Area (i.e. the APE). This consultation effort will be limited to Tribes with direct historical ties to the lands located within the Study Area. Consultation may include a combination of written correspondence and follow up interviews by a qualified ethnographer, depending upon the results of the initial literature review and research efforts.
- Ethnographic information developed through this effort will be used to develop background and contextual information. Detailed information that is developed through this effort, especially information that identifies the location of sacred sites, TCPs and other culturally sensitive resources will be documented in a confidential technical report that will only be submitted to select Tribal representatives and resource agencies.

#### Identify and Relocate Known Cultural Resources

- Conduct a records search to obtain and update information about known cultural resources located within the Study Area (i.e. the APE), including resources that may have been identified since the previous relicensing studies. Records searches will be conducted at:
  - BLM's Bakersfield Field Office;

- Tulare County Historical Society; and
- California Historical Resources Information System (CHRIS) Southern San Joaquin Valley Information Center (SSJVIC).
- Review archival material and records maintained by SCE, including reports and records prepared during the previous Kaweah relicensing effort.
- Identify Kaweah Project facilities and features that may not have been evaluated for the NRHP during the previous relicensing effort.
- Conduct a site visit to relocate all known cultural resources located within the Study Area.
  - Document existing condition of known cultural resources.
  - Accurately map features, artifacts, and site boundaries, if necessary, using sub-meter Global Positioning System (GPS) technology. All GPS data will subsequently be incorporated into a Geographic Information System (GIS).
  - Update site records, as necessary. All updated records will be submitted to the CHRIS – SSJVIC and to the BLM.

#### Conduct Pedestrian Surveys in Areas not Previously Surveyed

- Identify and map portions of the Study Area that have not been previously surveyed for cultural resources.
- Conduct field surveys in areas not previously surveyed to identify any new cultural resources.
  - Conduct pedestrian surveys in all previously unsurveyed areas located within the Study Area, excluding areas that are unsafe due to excessively steep slopes and/or covered by dense, impenetrable vegetation.
  - To the extent possible, field surveys will utilize a BLM Class III survey strategy (intensive) with thorough (complete) coverage within the APE. General or cursory coverage will be utilized in areas that physical obstructions (e.g., steep slopes, dense brush) and/or visual constraints (excessive grass or duff cover) preclude complete coverage.
  - The pedestrian surveys will be conducted by walking over the area to be examined in evenly-spaced transects not to exceed 30 meters, while examining the ground surface for objects and features that might show evidence of archaeological or historic sites.
  - The field surveys will not involve ground-disturbing activities such as excavation or shovel probes.
  - Site boundaries and feature locations will be mapped using a portable sub-meter GPS unit and all data collected in the field will be subsequently incorporated into a GIS.
  - Any artifacts or features that are discovered will be documented in notebooks and with photographs and sketches, as appropriate and left in place.
  - Information regarding new resources discovered through field surveys will be recorded on standardized 523 forms produced by the Department of Parks and Recreation (DPR), Office of Historic Preservation. All new records will be submitted to the CHRIS – SSJVIC and to the BLM.

- For surveys conducted on BLM land, a Fieldwork Authorization will be obtained from the BLM (CA State Office and Bakersfield Field Office).
- All surveys conducted on federal lands will be performed in accordance with a permit(s) obtained from the BLM, with respect to specific conditions outlined in the permit, including those outlined in the Special Permit Conditions Continuation Sheet: California Conditions.

### Prepare and Distribute CUL-1 Cultural Resource Inventory Report

- Prepare a Cultural Resource Inventory Report.
  - The report will include contextual background information, including ethnographic information.
  - The report will document all known and newly discovered cultural resources located within the Study Area.
  - The report will describe all study methods and results, including a thorough description of the survey strategies and coverage types that were utilized to conduct the surveys.
  - The report will include detailed maps, photographs and sketches, as necessary and any associated documentation such as site records.
  - A draft report will be distributed for review and comment and any comments received will be addressed in a final report, as appropriate.
  - Note that information about cultural resources, especially locational information, is considered confidential and cannot be distributed to the general public. Therefore, the CUL-1 Cultural Resource Inventory Report that is distributed to the public will exclude locational and other sensitive information. The resource agencies and Tribes will be provided with a complete report marked “Confidential – Not for Public Distribution”.

## **NRHP Eligibility Studies**

### Assess the Need for Eligibility Studies

- Utilize the results of the Cultural Resource Inventory Study (described above) to assess whether there are any cultural resources within the Study Area (i.e., APE) that should be evaluated to determine if they are eligible to be included in the NRHP per Section 106 of the NHPA. This assessment would be made in consultation with the resource agencies and Tribes.

### Conduct NRHP Evaluation Studies, if needed

- If eligibility studies are needed, prepare a NRHP Eligibility Evaluation Plan that identifies the specific resources to be evaluated and the evaluation methods.
- Obtain permit(s) from the BLM, as appropriate.
- Conduct studies to evaluate the NRHP eligibility of appropriate cultural resources located in the APE, including an evaluation of any Kaweah Project facilities that may not have been evaluated during the previous relicensing effort. Evaluation methods may include:
  - Consulting with stakeholders and others regarding the historical significance of affected cultural resources;

- Conducting archaeological test excavations;
- Collecting and analyzing archaeological materials;
- Conducting focused historical research pertaining to specific resources; and/or
- Detailed recordation of historic buildings or structures associated with the Kaweah Project.
- Prepare a report describing the evaluation methods, results and recommendations.
  - Consult with the resource agencies and Tribes, as appropriate, regarding the eligibility results and recommendations.
  - Sensitive information will be documented in a separate, confidential report.
- Provide the NRHP Eligibility Evaluation Report and any associated documentation to the State Historic Preservation Officer (SHPO) for review and concurrence.

**SCHEDULE:**

<b>Date</b>	<b>Activity</b>
<b>Cultural Resource Inventory Study</b>	
November 2017–March 2018	Consult with stakeholders and compile existing resource and ethnographic information
April–May 2018	Conduct field surveys
May–June 2018	Analyze data and prepare Draft Cultural Resource Inventory Report
July 2018	Distribute Draft Cultural Resources Inventory Report to stakeholders
July–September 2018	Stakeholders review and provide comments on draft report (90 days)
October 2018	Resolve comments and prepare final report
November 2018	Distribute final report to the stakeholders
<b>NRHP Eligibility Studies (if necessary)</b>	
November 2018–January 2019	Assess need for eligibility studies in consultation with stakeholders
February 2019–March 2019	Prepare NRHP Evaluation Plan in consultation with stakeholders and acquire permits, if necessary
April–May 2019	Conduct NRHP Evaluation Studies
June–July 2019	Analyze data and prepare Draft NRHP Evaluation Report
August 2019	Distribute Draft NRHP Evaluation Report to stakeholders in Draft License Application
August–October 2019	Stakeholders review and provide comments on draft report (90 days)
December 2019	Distribute final report to stakeholders in Final License Application and simultaneously submit to SHPO for review/concurrence

**REFERENCES:**

- Lehman, Susan C., Williams, James C., Hicks, Robert A., Blount, Clinton M. 1990. A History and Significance Evaluation of the Kaweah Hydroelectric System, Tulare County, California. Submitted to Environmental Affairs Division, Southern California Edison Company, Rosemead, California. February 1990.
- Southern California Edison (SCE). 1992. Cultural Resources Management Plan for Southern California Edison Company's Kaweah Hydroelectric Project Tulare County, California, FERC Project No. 298. November 1992.
- Taylor, Tom. 1989. Archaeological Survey and Reconnaissance Report, Kaweah Hydroelectric Project, Tulare County, California. On file at Southern California Edison Company. Rosemead: Environmental Affairs Division.
- Taylor, T. and Jackson, T., 1989a. Archaeological Site Record for CA-TUL-1478. Recorded August 10, 1989.
- Taylor, T. and Jackson, T., 1989b. Archaeological Site Record for CA-TUL-1480/H. Recorded August 11, 1989.
- U.S. Bureau of Land Management (BLM). 2004. Manual 8110. Identifying and Evaluating Cultural Resources.
- \_\_\_\_\_. 2007. Special Permit Conditions Continuation Sheet: California Conditions.
- \_\_\_\_\_. Undated. California BLM Guidelines for a Cultural Resources Inventory.
- U.S. BLM, California SHPO, Nevada SHPO (BLM et al). 2014. State Protocol Agreement Among the California State Director of the BLM and the California SHPO and the Nevada SHPO regarding the Manner in which the BLM will meet its Responsibilities under the National Historic Preservation Act and the National Programmatic Agreement among the BLM, the Advisory Council on Historic Preservation, and the National Conference of State Historic Preservation Officers.
- Wickstrom Brian P., C Kristina Roper, and Thomas L. Jackson. 1990. Archaeological Survey Test Excavation and Evaluation of CA-TUL-232, CA-TUL-1478, and CA-Tul-1480/H near Three Rivers, Tulare County, California. On file at Southern California Edison Company.

## **TABLES**

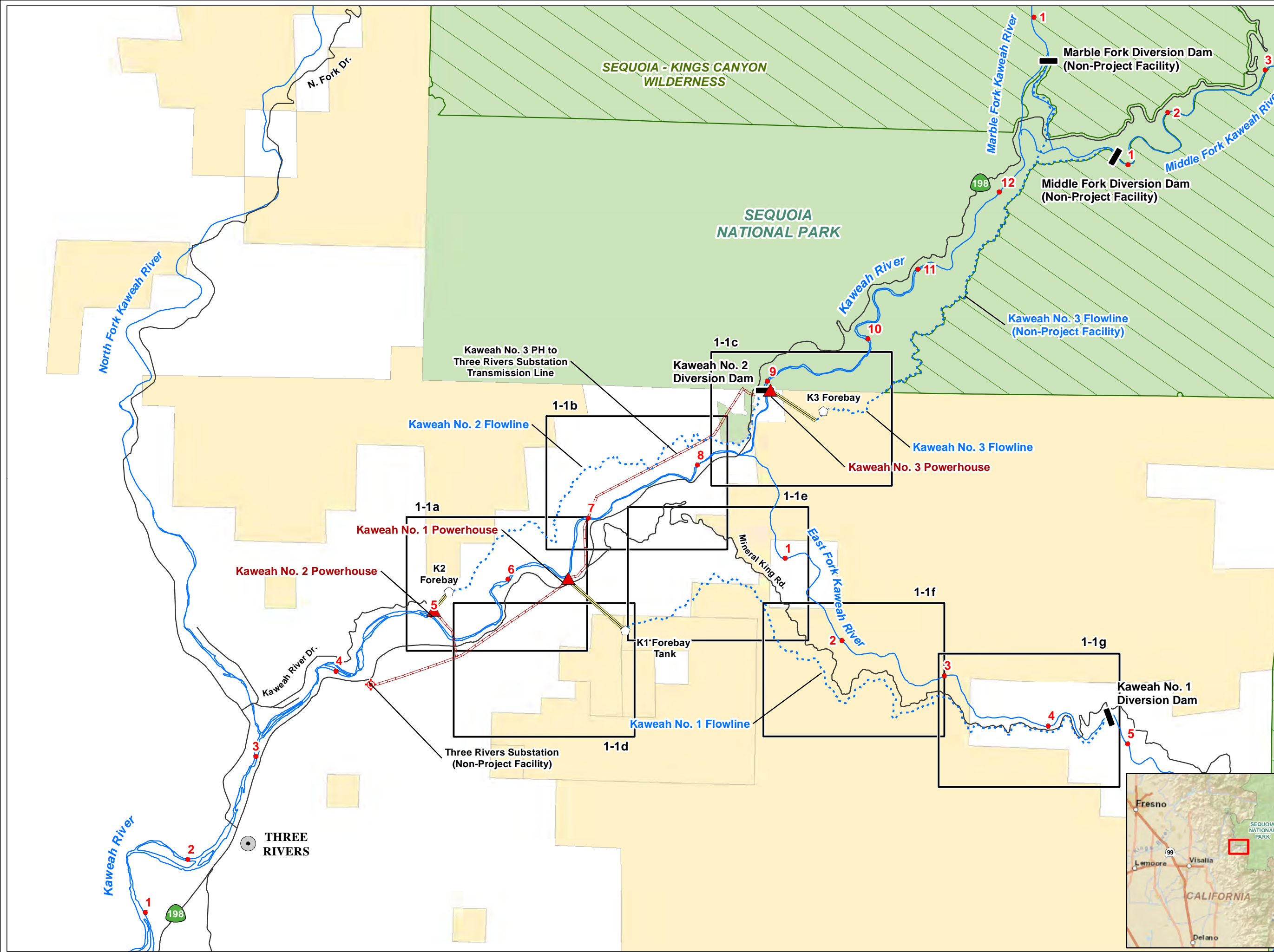


**Table CUL 1-1. Cultural Resource Survey Area for Facilities that Lie Outside of the Existing FERC Project Boundary.**


<b>Project Facility</b>	<b>Survey Area</b>
Diversion Dams and Pools	15 feet around the perimeter
Flowlines <sup>1</sup>	20 feet on either side
Forebays/Forebay Tank	20 feet around the perimeter
Penstocks	15 feet on either side
Powerhouses and Switchyards	Within and up to 15 feet around the perimeter fence
Transmission, Power, and Communication Lines	25 feet on either side
Gages	10 feet around gages
Project Access Roads	20 feet on either side
Project Trails	15 feet on either side
<b>Ancillary and Support Facilities</b>	
Kaweah No. 1 Powerhouse Campus	Within the developed campus
Repeaters and Solar Panels	15 feet around the perimeter
River Access Parking	10 feet around parking area and beach

<sup>1</sup>Footbridges, wildlife bridges, and wildlife escape ramps are located on Project flowlines and will be surveyed concurrently with the flowlines.

## **MAPS**



- ### Facilities
- Powerhouse
  - Diversion
  - Utility
  - Forebay
  - Flowline
  - Penstock
  - Transmission Line
- ### Other Features
- City/Town
  - Highway/Road
  - Watercourse
  - Water Body
  - River Mile
- ### Land Jurisdiction\*
- Bureau of Land Management
  - National Park Service
  - Private (Blank)
- \*SOURCE: BLM 2012.  
Kaweah Project entirely within Tulare County.
- ### Land Management
- National Wilderness Area




**SOUTHERN CALIFORNIA EDISON**  
An EDISON INTERNATIONAL® Company

---

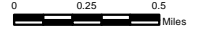
Eastern Hydro Generation

**Map CUL 1-1**


**Kaweah Project Index Map**



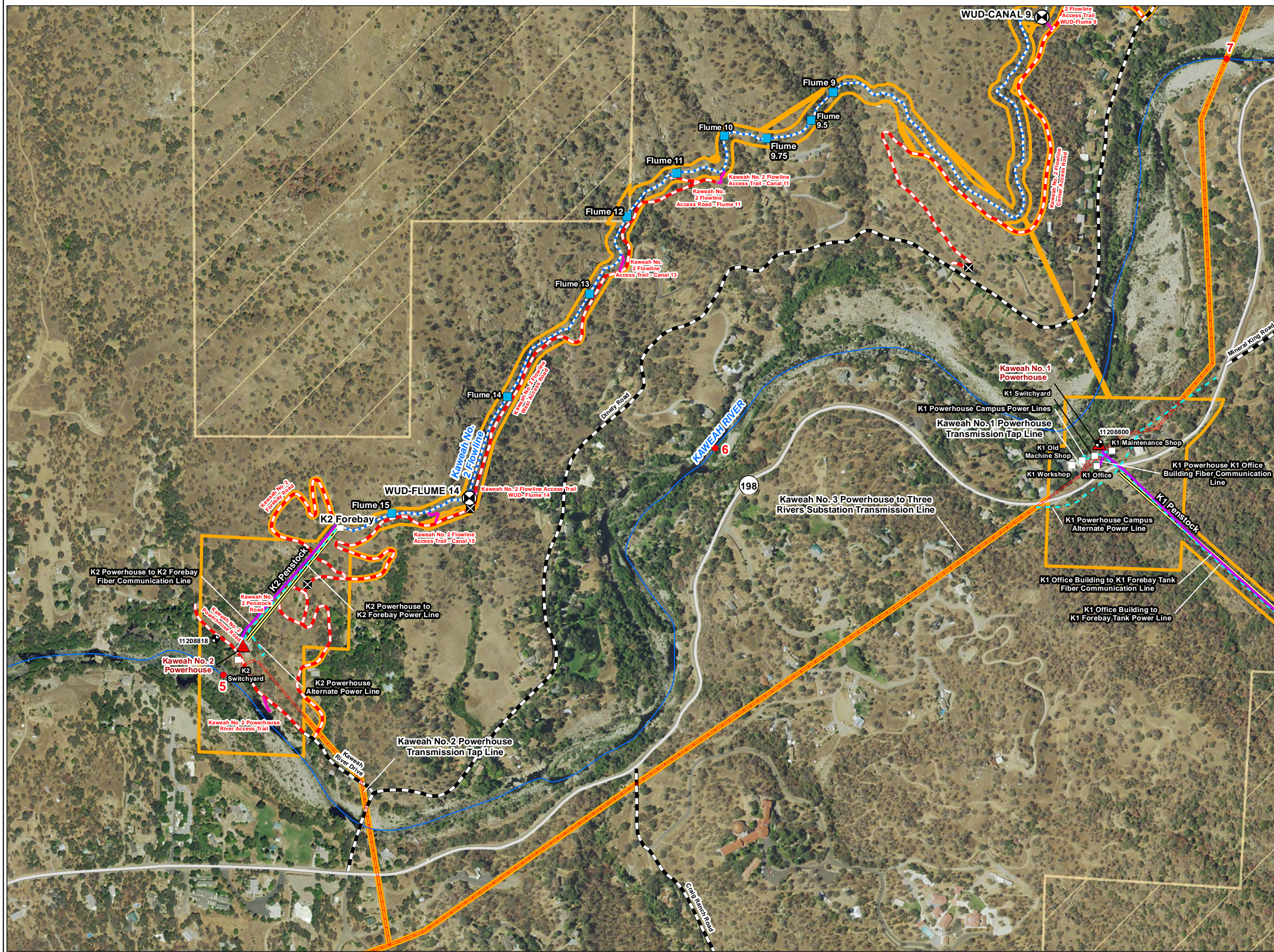
Date: 12/9/2015



Projection: UTM Zone 11  
Datum: NAD 83



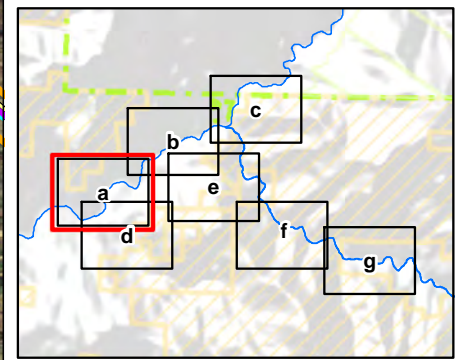
Southern California Edison (SCE) has no reason to believe that there are any inaccuracies or defects with information incorporated in this work and make no representations of any kind, including, but not limited to, the warranties of merchantability or fitness for a particular use, nor are any such warranties to be implied, with respect to the information or data, furnished herein. No part of this map may be reproduced or transmitted in any form or by any means, electronic or mechanical, including photocopying and recording system, except as expressly permitted in writing by SCE.




- ### Facilities
- ▲ Powerhouse
  - Diversion
  - Flowline
  - Penstock
  - Flume Segment
  - Ancillary Facility
  - ⊗ Gage
  - Transmission Line
  - Power Line
  - Communication Line
  - FERC Boundary
- ### Other Features
- Watercourse
  - Water Body
  - ⊗ Water User Diversion
  - River Mile
- ### Transportation
- Project Road
  - Project Trail
  - Non-Project General Access Road
  - ⊗ Gate

- ### Land Jurisdiction\*
- Bureau of Land Management
  - Wilderness Area
  - National Park Service

\*SOURCE: BLM 2012  
Kaweah Project entirely within Tulare County






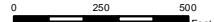
**SOUTHERN CALIFORNIA  
EDISON**  
An EDISON INTERNATIONAL Company

Eastern Hydro Generation

**Map CUL 1-1a  
Kaweah Project**

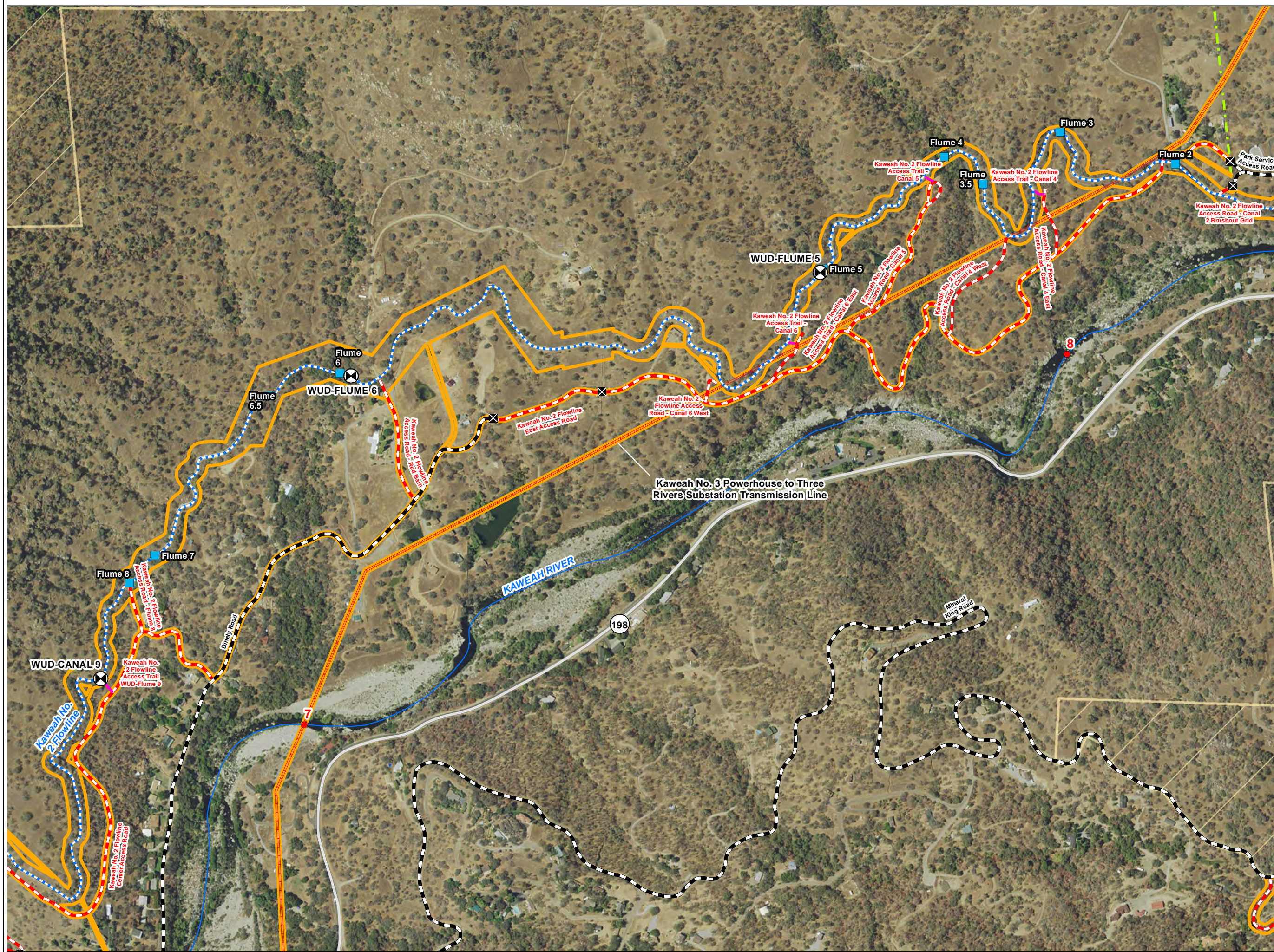


Date: 12/3/2015



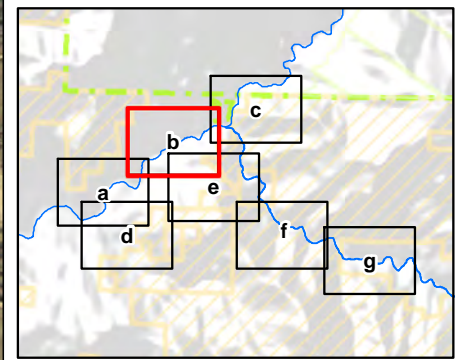
Projection: UTM Zone 11  
Datum: NAD 83


Southern California Edison (SCE) has no reason to believe that there are any inaccuracies or defects with information incorporated in this work and make no representations of any kind, including, but not limited to, the warranties of merchantability or fitness for a particular use, nor are any such warranties to be implied, with respect to the information or data, furnished herein. No part of this map may be reproduced or transmitted in any form or by any means, electronic or mechanical, including photocopying and recording system, except as expressly permitted in writing by SCE.



- Facilities**
- Powerhouse
  - Diversion
  - Flowline
  - Penstock
  - Flume Segment
  - Ancillary Facility
  - Gage
  - Transmission Line
  - Power Line
  - Communication Line
  - FERC Boundary
- Other Features**
- Watercourse
  - Water Body
  - Water User Diversion
  - River Mile
- Transportation**
- Project Road
  - Project Trail
  - Non-Project General Access Road
  - Gate
- Land Jurisdiction\***
- Bureau of Land Management
  - Wilderness Area
  - National Park Service


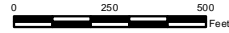
\*SOURCE: BLM 2012  
Kaweah Project entirely within Tulare County



  
**SOUTHERN CALIFORNIA EDISON**  
 An EDISON INTERNATIONAL® Company

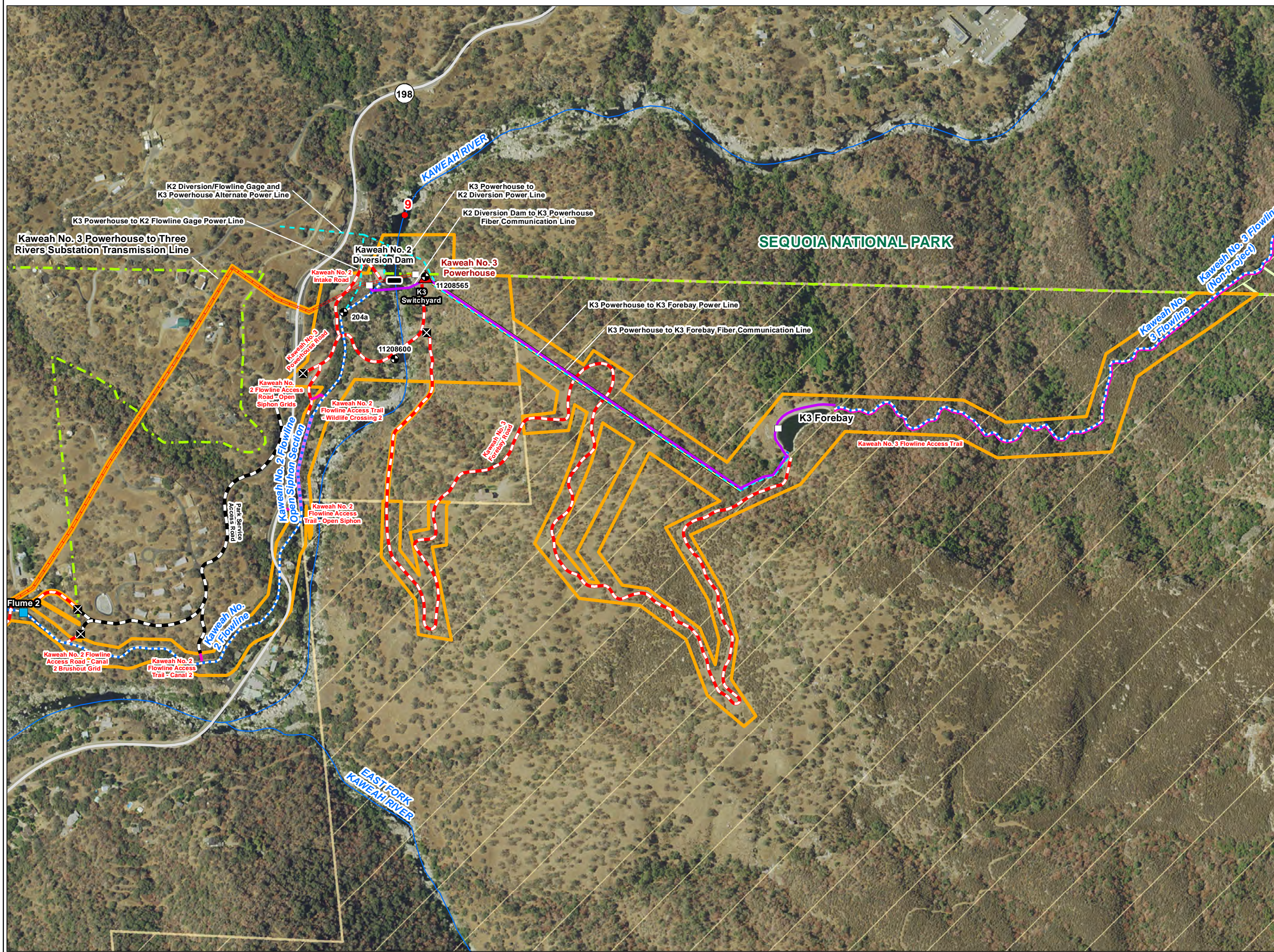
Eastern Hydro Generation

**Map CUL 1-1b**  
Kaweah Project

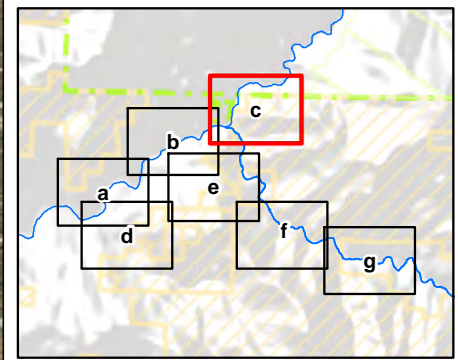
Projection: UTM Zone 11  
 Datum: NAD 83  
 Date: 12/3/2015


Southern California Edison (SCE) has no reason to believe that there are any inaccuracies or defects with information incorporated in this work and make no representations of any kind, including, but not limited to, the warranties of merchantability or fitness for a particular use, nor are any such warranties to be implied, with respect to the information or data, furnished herein. No part of this map may be reproduced or transmitted in any form or by any means, electronic or mechanical, including photocopying and recording system, except as expressly permitted in writing by SCE.



- ### Facilities
- ▲ Powerhouse
  - Diversion
  - Flowline
  - Penstock
  - Flume Segment
  - Ancillary Facility
  - Gage
  - Transmission Line
  - Power Line
  - Communication Line
  - FERC Boundary
- ### Other Features
- Watercourse
  - Water Body
  - ⊗ Water User Diversion
  - River Mile
- ### Transportation
- - - Project Road
  - Project Trail
  - - - Non-Project General Access Road
  - ⊗ Gate
- ### Land Jurisdiction\*
- Bureau of Land Management
  - Wilderness Area
  - National Park Service

\*SOURCE: BLM 2012  
Kaweah Project entirely within Tulare County






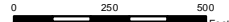
**SOUTHERN CALIFORNIA EDISON**  
An EDISON INTERNATIONAL Company

Eastern Hydro Generation

**Map CUL 1-1c  
Kaweah Project**



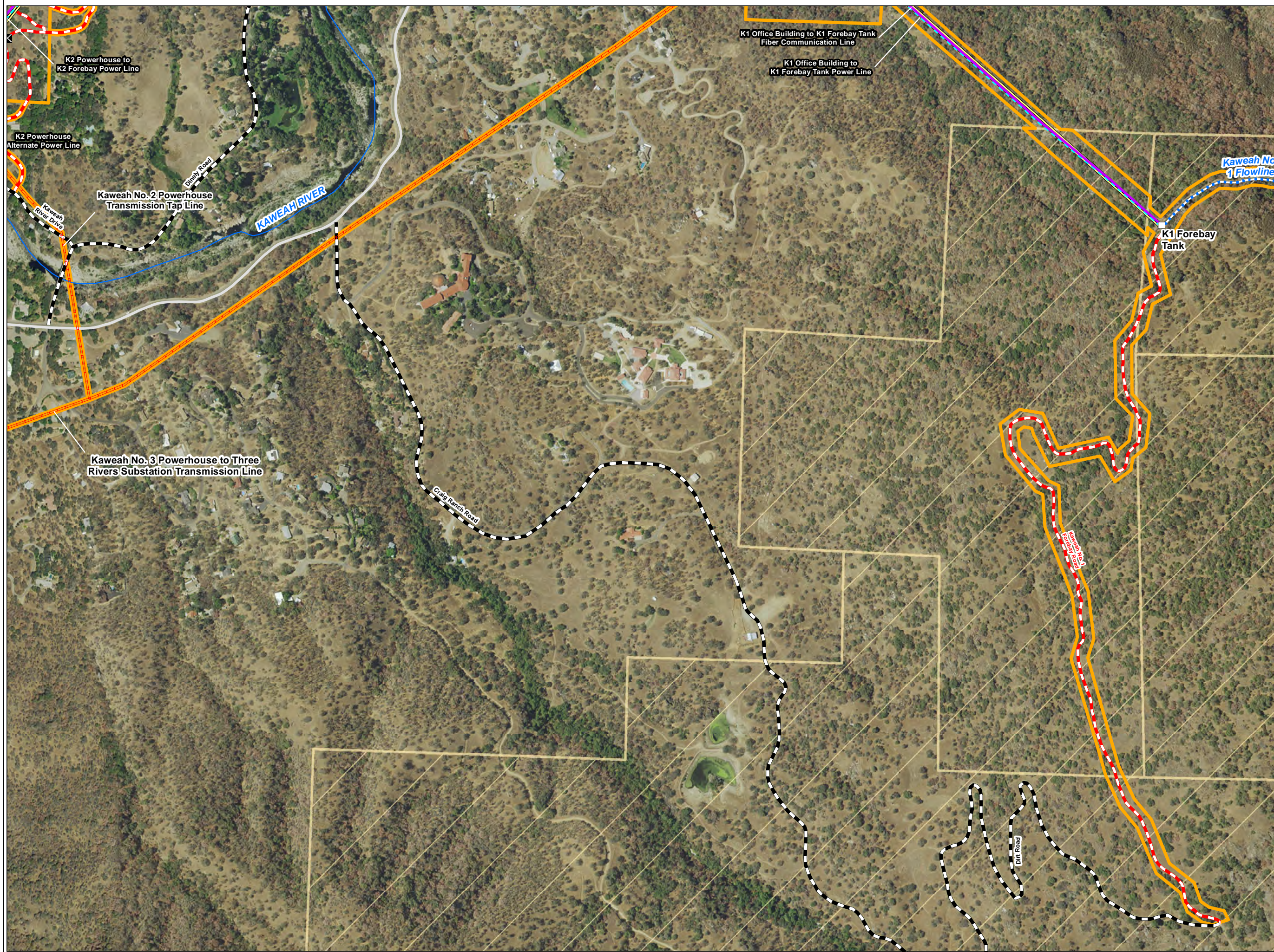
Date: 12/3/2015



0 250 500 Feet

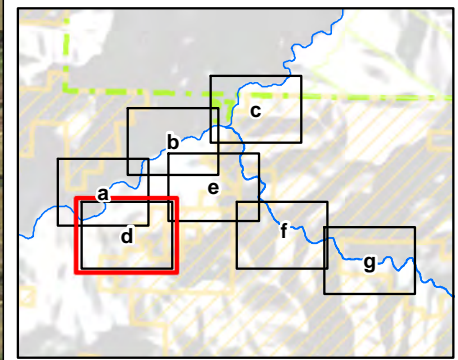
Projection: UTM Zone 11  
Datum: NAD 83


Southern California Edison (SCE) has no reason to believe that there are any inaccuracies or defects with information incorporated in this work and make no representations of any kind, including, but not limited to, the warranties of merchantability or fitness for a particular use, nor are any such warranties to be implied, with respect to the information or data, furnished herein. No part of this map may be reproduced or transmitted in any form or by any means, electronic or mechanical, including photocopying and recording system, except as expressly permitted in writing by SCE.



- Facilities**
- ▲ Powerhouse
  - Diversion
  - ... Flowline
  - Penstock
  - Flume Segment
  - Ancillary Facility
  - ⊕ Gage
  - Transmission Line
  - Power Line
  - Communication Line
  - ▭ FERC Boundary
- Other Features**
- Watercourse
  - Water Body
  - ⊗ Water User Diversion
  - River Mile
- Transportation**
- Project Road
  - Project Trail
  - Non-Project General Access Road
  - ⊗ Gate
- Land Jurisdiction\***
- ▨ Bureau of Land Management
  - ▨ Wilderness Area
  - ▨ National Park Service


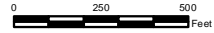
\*SOURCE: BLM 2012  
Kaweah Project entirely within Tulare County



  
**SOUTHERN CALIFORNIA EDISON**  
 An EDISON INTERNATIONAL Company

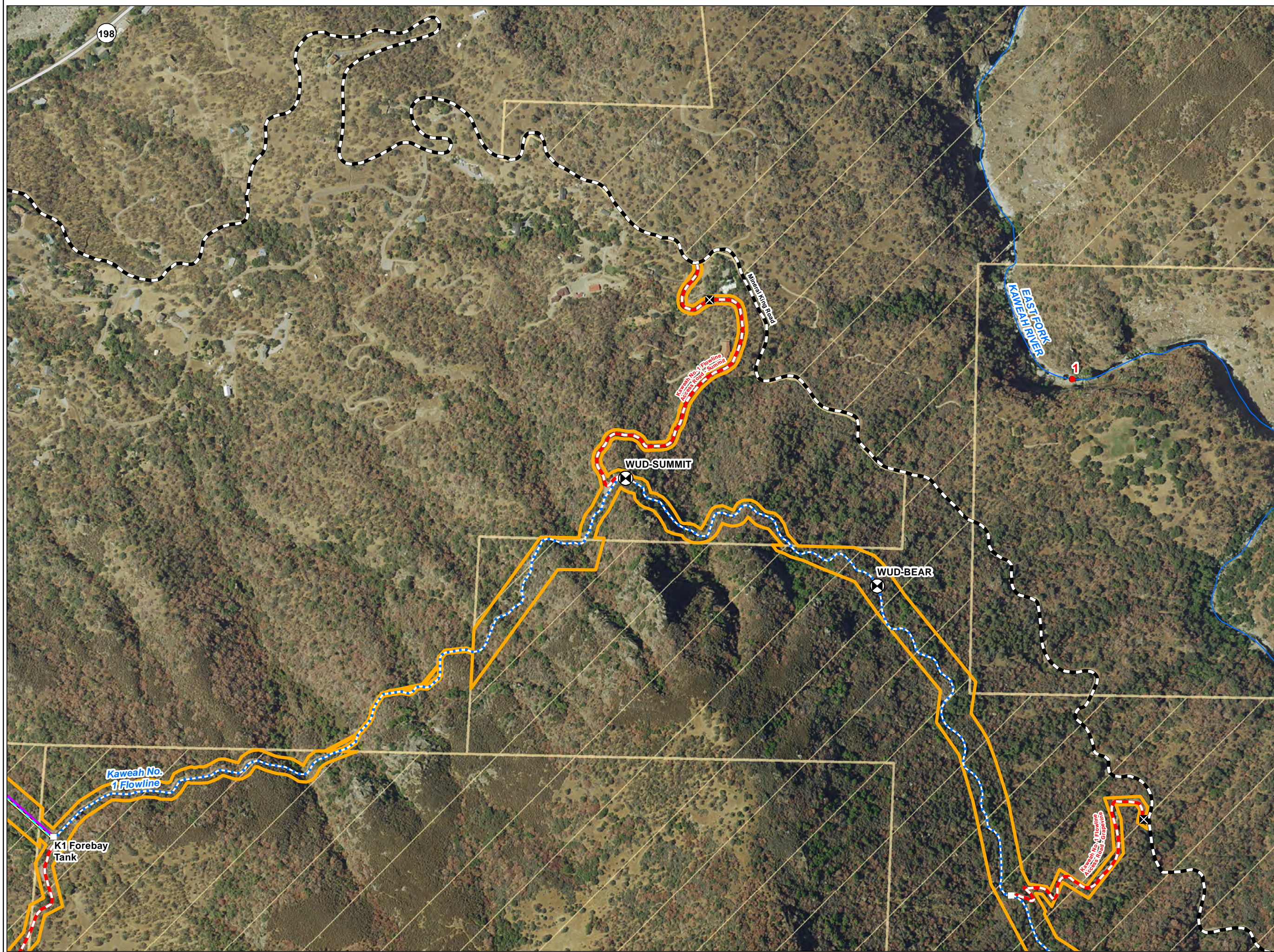
Eastern Hydro Generation

**Map CUL 1-1d  
Kaweah Project**

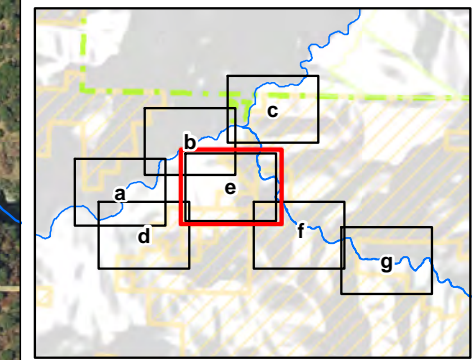
Projection: UTM Zone 11  
 Datum: NAD 83

Southern California Edison (SCE) has no reason to believe that there are any inaccuracies or defects with information incorporated in this work and make no representations of any kind, including, but not limited to, the warranties of merchantability or fitness for a particular use, nor are any such warranties to be implied, with respect to the information or data, furnished herein. No part of this map may be reproduced or transmitted in any form or by any means, electronic or mechanical, including photocopying and recording system, except as expressly permitted in writing by SCE.



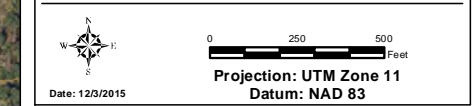
- Facilities**
- Powerhouse
  - Diversion
  - Flowline
  - Penstock
  - Flume Segment
  - Ancillary Facility
  - Gage
  - Transmission Line
  - Power Line
  - Communication Line
  - FERC Boundary
- Other Features**
- Watercourse
  - Water Body
  - Water User Diversion
  - River Mile
- Transportation**
- Project Road
  - Project Trail
  - Non-Project General Access Road
  - Gate
- Land Jurisdiction\***
- Bureau of Land Management
  - Wilderness Area
  - National Park Service

\*SOURCE: BLM 2012  
Kaweah Project entirely within Tulare County



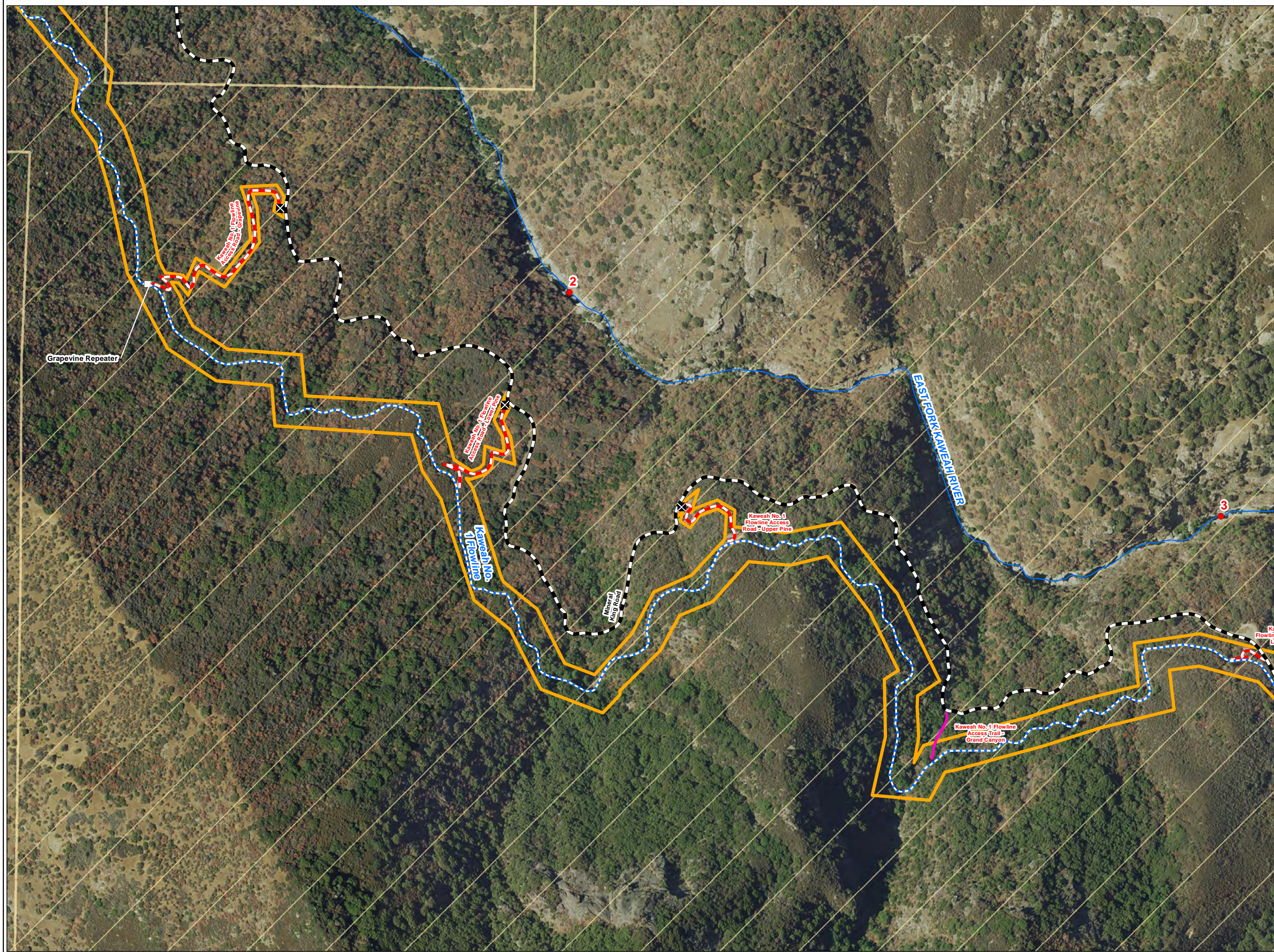
Eastern Hydro Generation

**Map CUL 1-1e**  
**Kaweah Project**



Southern California Edison (SCE) has no reason to believe that there are any inaccuracies or defects with information incorporated in this work and make no representations of any kind, including, but not limited to, the warranties of merchantability or fitness for a particular use, nor are any such warranties to be implied, with respect to the information or data, furnished herein. No part of this map may be reproduced or transmitted in any form or by any means, electronic or mechanical, including photocopying and recording system, except as expressly permitted in writing by SCE.





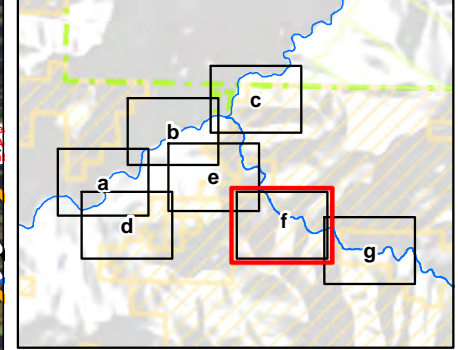
- ### Facilities
- Powerhouse
  - Diversion
  - Flowline
  - Penstock
  - Flume Segment
  - Ancillary Facility
  - Gage
  - Transmission Line
  - Power Line
  - Communication Line
  - FERC Boundary


- ### Other Features
- Watercourse
  - Water Body
  - Water User Diversion
  - River Mile

- ### Transportation
- Project Road
  - Project Trail
  - Non-Project General Access Road
  - Gate

- ### Land Jurisdiction\*
- Bureau of Land Management
  - Wilderness Area
  - National Park Service

\*SOURCE: BLM 2012  
Kaweah Project entirely within Tulare County






**SOUTHERN CALIFORNIA EDISON**  
An EDISON INTERNATIONAL Company

---

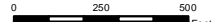
Eastern Hydro Generation

**Map CUL 1-1f**  
**Kaweah Project**

---



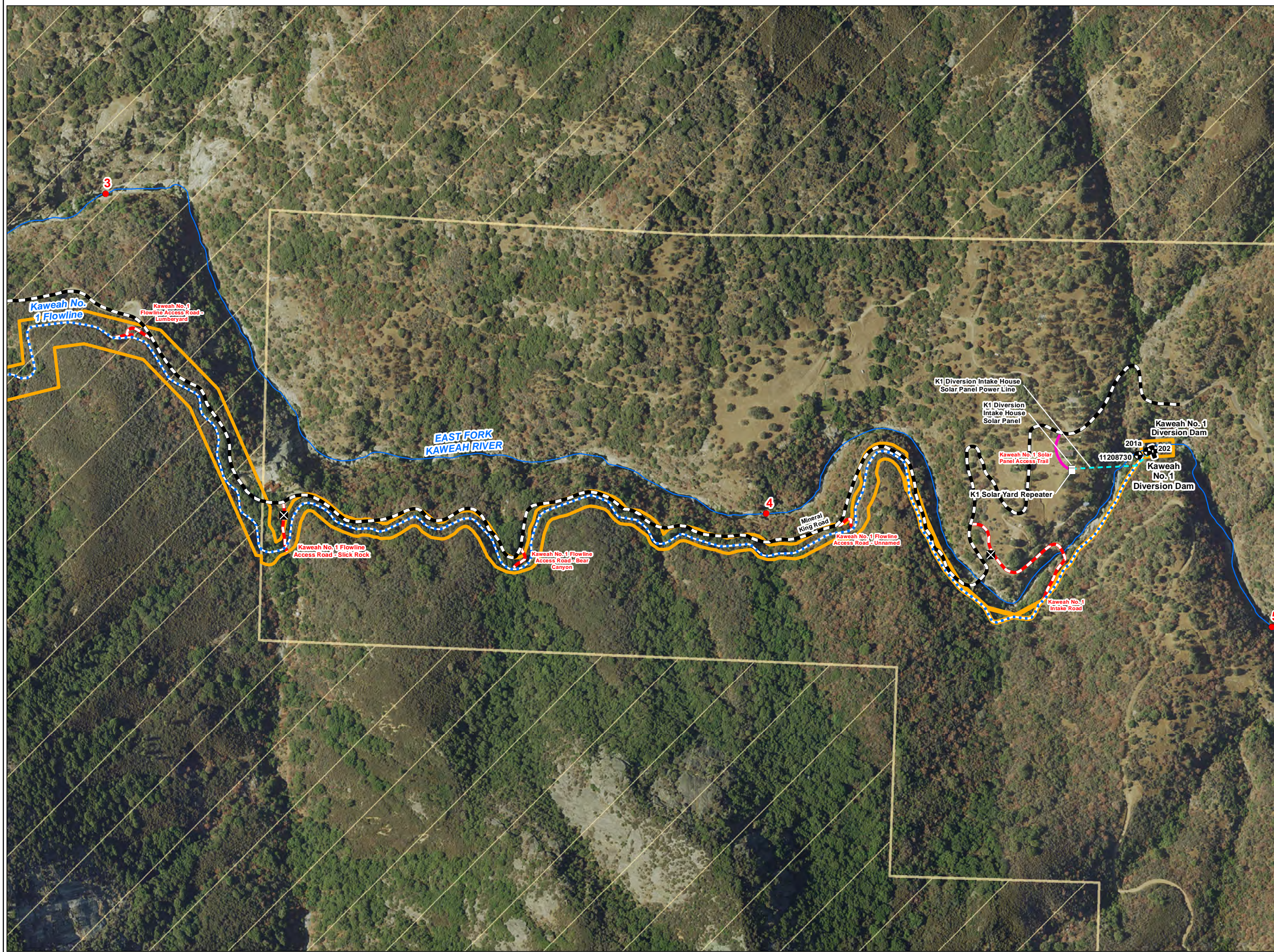
Date: 12/3/2015



Projection: UTM Zone 11  
Datum: NAD 83

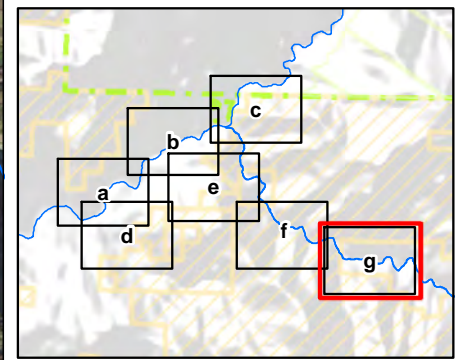
---


Southern California Edison (SCE) has no reason to believe that there are any inaccuracies or defects with information incorporated in this work and make no representations of any kind, including, but not limited to, the warranties of merchantability or fitness for a particular use, nor are any such warranties to be implied, with respect to the information or data, furnished herein. No part of this map may be reproduced or transmitted in any form or by any means, electronic or mechanical, including photocopying and recording system, except as expressly permitted in writing by SCE.



- ### Facilities
- Powerhouse
  - Diversion
  - Flowline
  - Penstock
  - Flume Segment
  - Ancillary Facility
  - Gage
  - Transmission Line
  - Power Line
  - Communication Line
  - FERC Boundary
- ### Other Features
- Watercourse
  - Water Body
  - Water User Diversion
  - River Mile
- ### Transportation
- Project Road
  - Project Trail
  - Non-Project General Access Road
  - Gate
- ### Land Jurisdiction\*
- Bureau of Land Management
  - Wilderness Area
  - National Park Service

\*SOURCE: BLM 2012  
Kaweah Project entirely within Tulare County






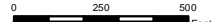
**SOUTHERN CALIFORNIA EDISON**  
An EDISON INTERNATIONAL® Company

Eastern Hydro Generation

**Map CUL 1-1g  
Kaweah Project**



Date: 12/3/2015



Projection: UTM Zone 11  
Datum: NAD 83

Southern California Edison (SCE) has no reason to believe that there are any inaccuracies or defects with information incorporated in this work and make no representations of any kind, including, but not limited to, the warranties of merchantability or fitness for a particular use, nor are any such warranties to be implied, with respect to the information or data, furnished herein. No part of this map may be reproduced or transmitted in any form or by any means, electronic or mechanical, including photocopying and recording system, except as expressly permitted in writing by SCE.