

Project Timeline

- December 2016: The CPUC issued the Permit To Construct for the Valley South Subtransmission Project.
- Mid year 2019: Anticipated start of construction.
- Late to end 2020: Anticipated project completion.

For More Information

For more information, please call the project hotline at **1-866-785-7057** or visit www.sce.com/valleysouth.

Emergency number:
For construction-related emergencies, please call SCE emergency line at **(800) 611-1911**

Como Ponerse en Contacto con Nosotros
Para obtener informacion acerca del proyecto de infraestructura Valley South por favor visite www.sce.com/valleysouth Tambien puede llamar a nuestra linea de informacion gratuita al **1-866-785-7057**.

For the latest construction information, please visit our website at www.sce.com/valleysouth

Every effort will be made to reduce the amount of noise generated by the activities related to construction. SCE understands that construction may be inconvenient to local residents. We greatly appreciate your patience as we move to complete construction as quickly and safely as possible.

2244 Walnut Grove Avenue
G0 1, Quad 4C, 472F
Rosemead, CA 91770

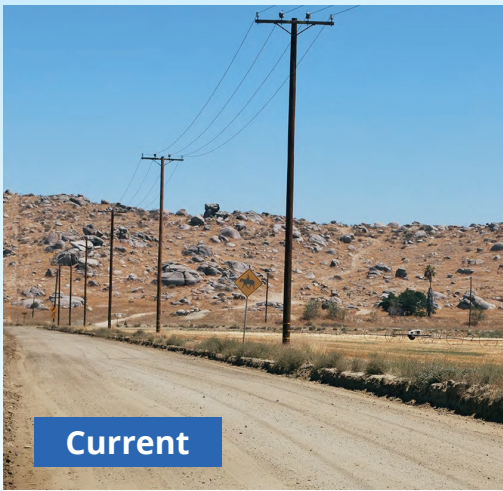


<<OWNER NAME>>
<<MAILING ADDRESS>>
<<MAILING CITY>>, <<State>> <<Zip>>

SPRING 2019
CONSTRUCTION UPDATE



Valley South Subtransmission Project
Powering the Region for the 21st Century



Current



Proposed

Simulated view from Leon Road, just north of Holland Road, looking north/northeast.

Valley South Subtransmission Project

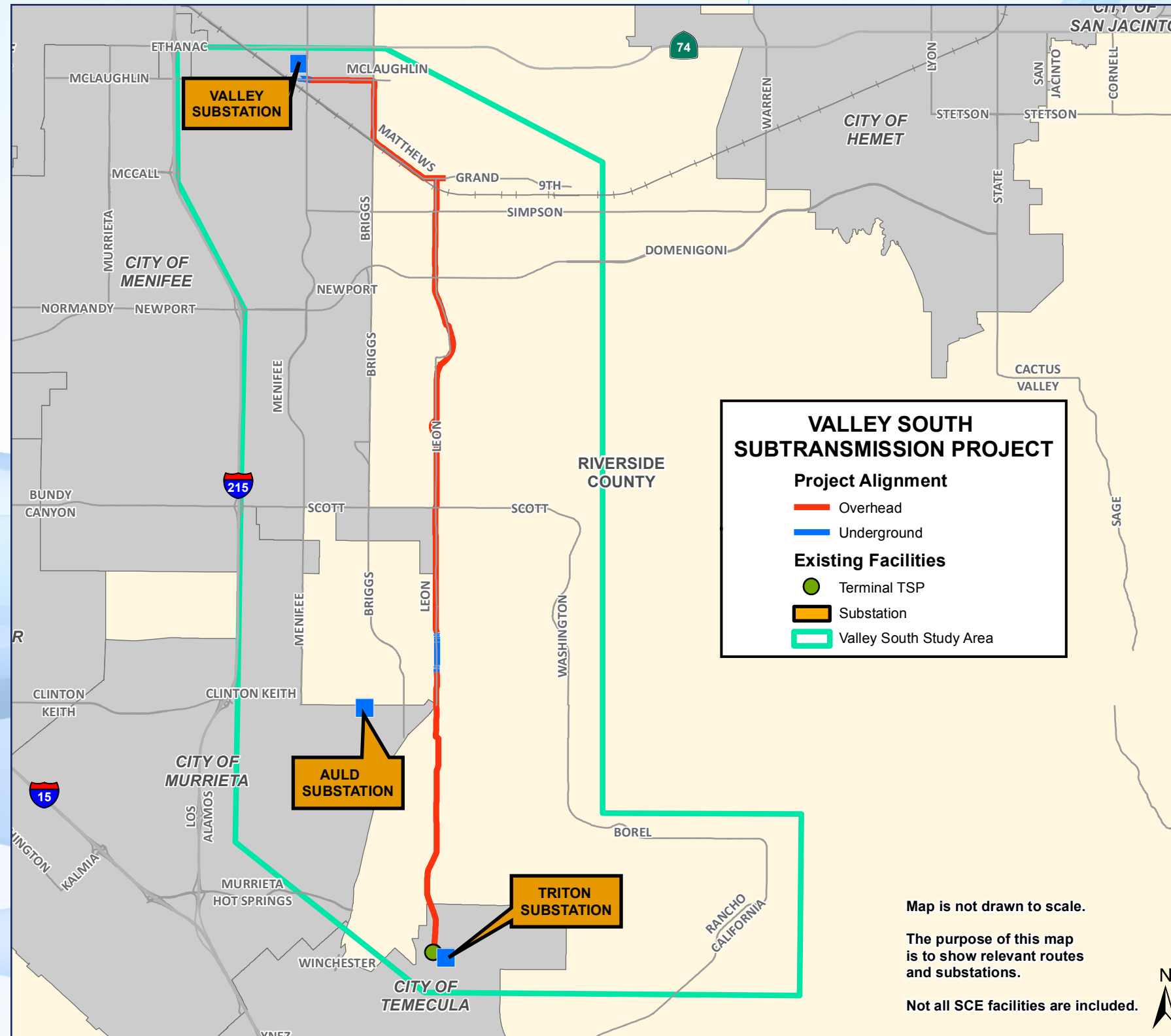
The Valley South Subtransmission Project is Southern California Edison's proposal to upgrade the region's existing electrical infrastructure and improve overall electrical reliability in the cities of Menifee, Murrieta, Temecula, Wildomar and portions of southwestern Riverside County, including French Valley and Winchester.

Project Need

Portions of SCE's existing electrical infrastructure serving the area are near or at their operating limits. Much of the electrical infrastructure that serves our communities today was built decades ago, when the typical household's electrical needs were very different. The proposed project addresses increasing electrical usage by residents and businesses in the area. The proposed project is necessary for SCE to continue safely providing reliable power to our customers.

Project Description

- The approved project is approximately 15 miles in length.
- A new 115 kilovolt (kV) subtransmission line will be constructed, starting from our existing Valley Substation in Menifee and ending east of our existing Auld Substation in Murrieta.
- We will reconductor (install new conductor wires) on approximately 3.4 miles of an existing 115 kV line from east of our existing Auld Substation in Murrieta to west of our existing Triton Substation in Temecula.
- We will install communication equipment inside mechanical buildings at existing area substations to support the project.
- Equipment modifications will occur at Valley Substation in Menifee.



The Project in Your Area

Menifee

Near Valley Substation: Install new 115 kV subtransmission line and equipment modifications at the Valley Substation.

Riverside County

North of Benton Road: Install a new 115 kV subtransmission line.

South of Benton Road: Reconductor (install new conductor wires) on an existing 115 kV line.

Temecula

Reconductor (install new conductor wires) on an existing 115 kV line.

Tips for Minimizing construction impacts

In addition to our efforts to minimize the impacts to residents and businesses during construction, here are some simple tips that may help you reduce construction disturbance:

- Close all windows and doors facing the construction area in order to reduce noise and dust.
- Watch for information updates in the form of mailers, door hangers, etc to ensure you have the most up-to-date information about construction activities taking place in your area.